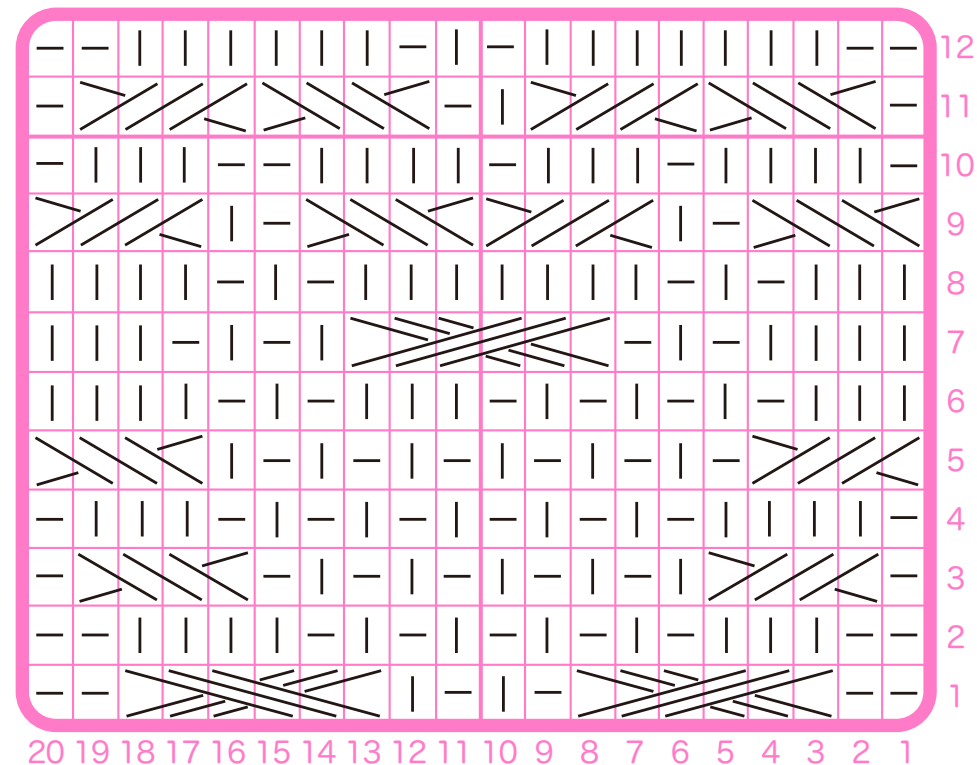


# X PATTERN20 CABLE♡♡♡



- | 表編み=knit    - 裏編み=purl
- / \ / \ / \ 右上3×1目交差=C4F(Cable5Front)
- \ / \ / \ / 左上3×1目交差=C4B(Cable5Back)
- / \ / \ / \ / \ / \ 右上3目交差=C6F(Cable6Front)
- \ / \ / \ / \ / \ / \ 左上3目交差=C6B(Cable6Back)

1模様 = 20目12段 (1 pattern = 20sts 12rows)