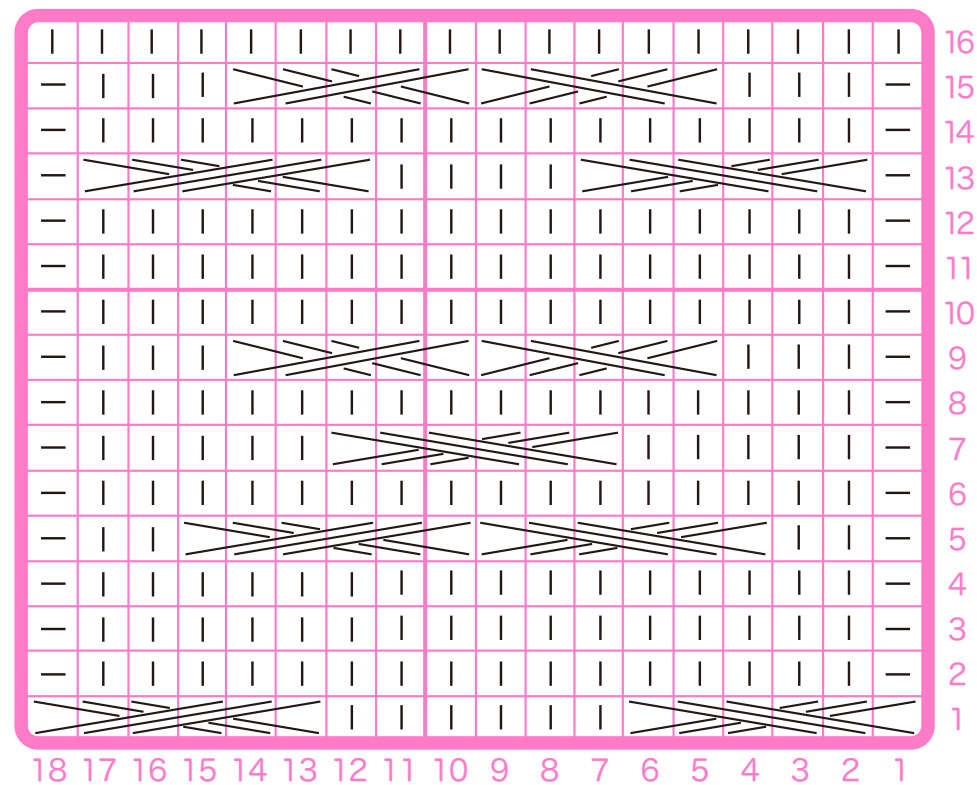


X PATTERN 17 CABLE



- | 表編み=knit - 裏編み=purl
- 右上3目交差=C6F(Cable6Front)
- 右上3目交差=C6B(Cable6Back)
- 右上2×3目交差=C5F(Cable5Front)
- 左上2×3目交差=C5B(Cable5Back)

1模様 = 18目16段 (1 pattern = 18 sts 16 rows)